

## FINISHES

### FLOORING

1. **Living/Dining/Foyer/ Bedrooms:** Vitrified tiles (double charge-marble finish)
2. **Master bed room:** Wood finish Vitrified tiles
3. **Kitchen:** Vitrified tiles
4. **Balcony/ Utility:** Anti-skid Ceramic tiles
5. **Toilets:** Anti-skid Ceramic tiles with threshold

### WALLS

1. **All Internal walls:** Gyp /Cement Plastered & putty Painted in Plastic Emulsion
2. **Kitchen:** Platform in granite with facia Patti & ceramic tile dado for 2 ft above the platform with SS sink
3. **Toilets:** Glazed / Matt - ceramic dado tiles up to false ceiling

### CEILINGS

1. **All Internal Ceilings:** Finished with Gypsum & painted in emulsion
2. **Toilets:** Modular Grid False Ceiling

### HANDRAILS

1. **Balcony/ terrace:** Glass Railings/ MS or powder coated Railings as per Elevation / Architect's design

## PLUMBING / SANITARY FITTINGS

### ALL TOILETS

1. **CP fixtures:** luxurious Quality fixtures for EWC, Washbasin & shower areas
2. **EWC:** luxurious Quality wall Mounted EWC Flush Valve, Health Faucet with seat cover
3. **Wash basin:** luxurious Quality Counter/counter top/freestanding washbasin

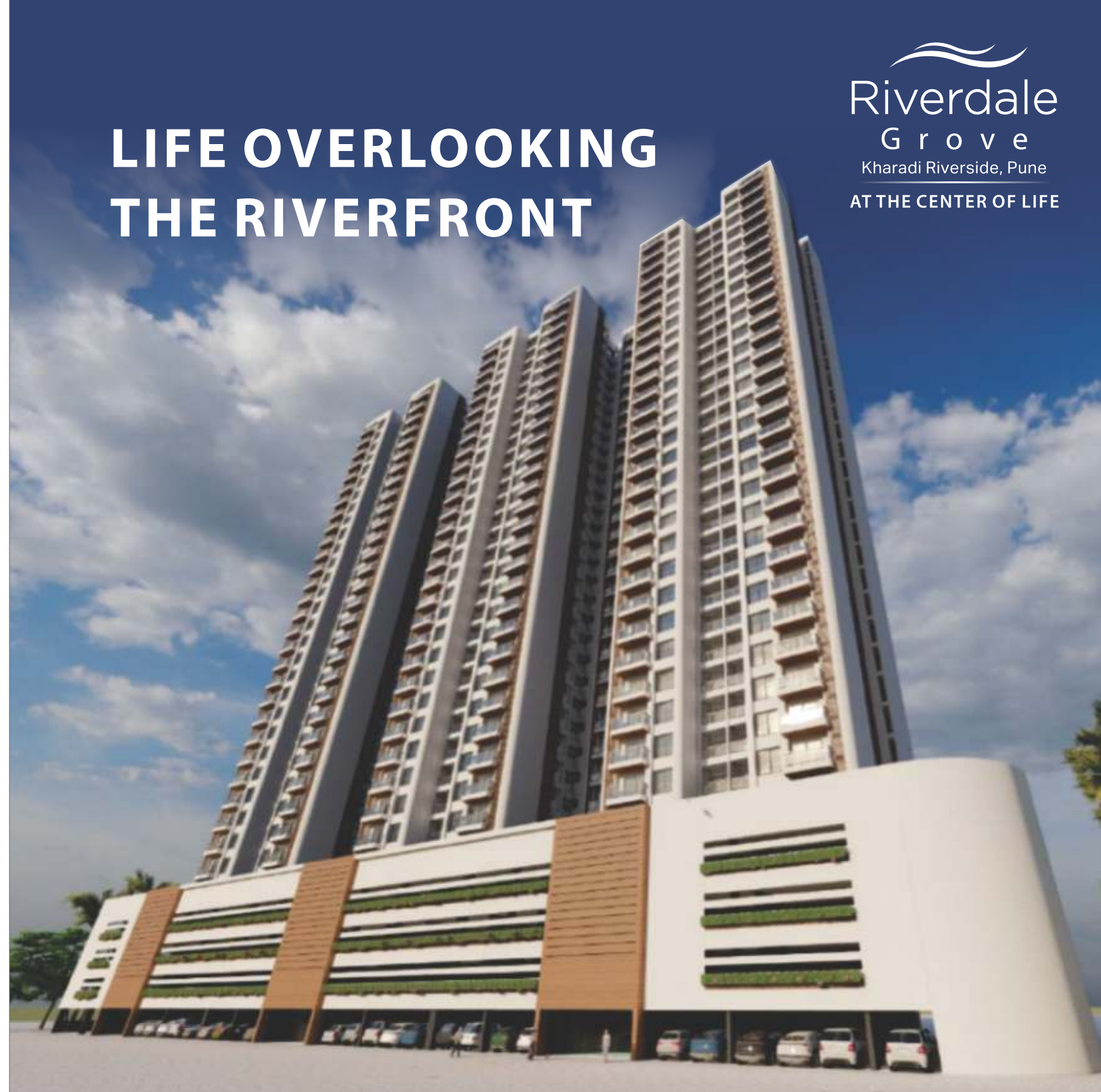
### KITCHEN

1. **CP Fittings:** Sink Tap-wall /top mounted
2. **Provisions:** for Water Purifier (Electrical & plumbing lines)

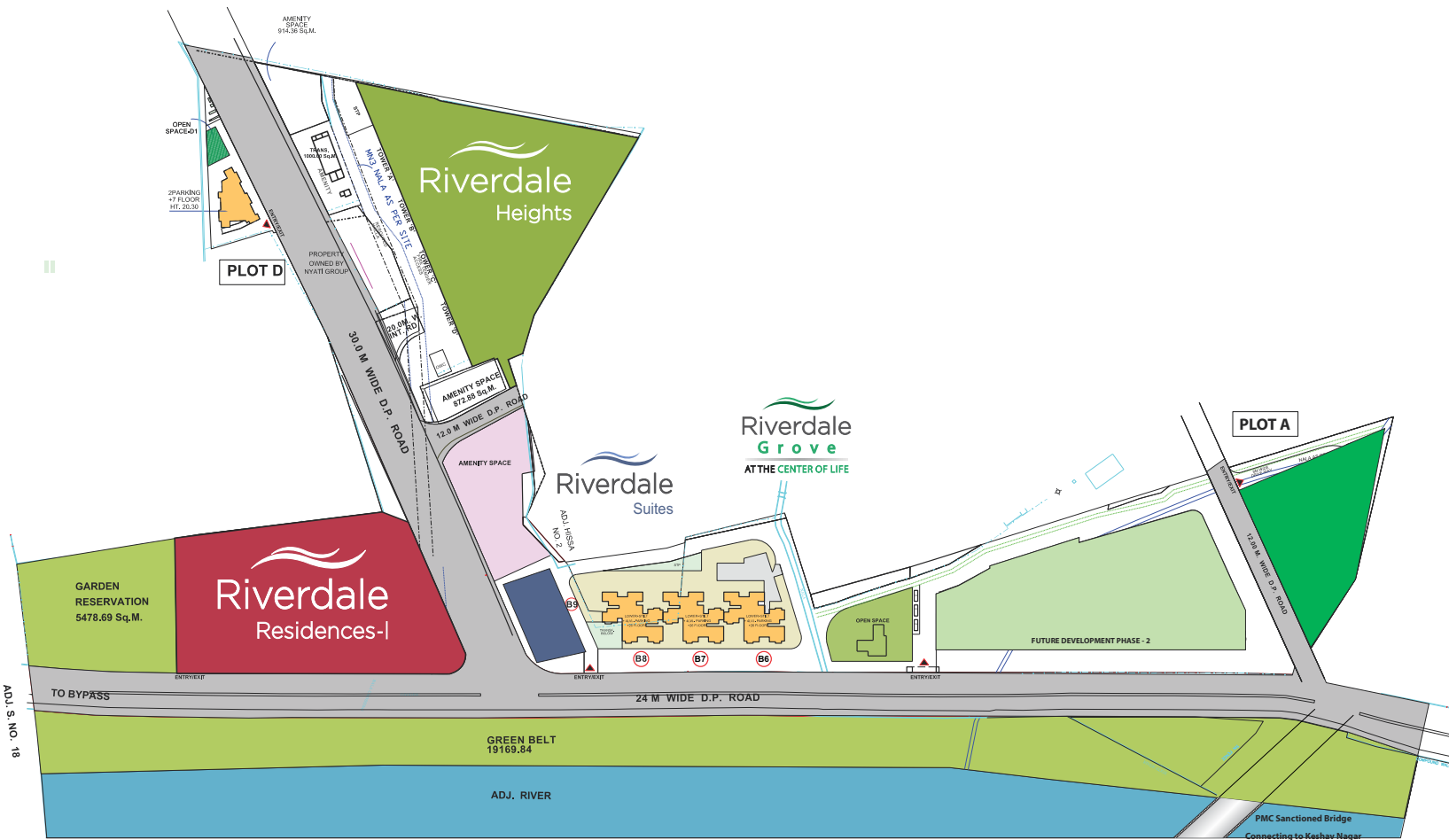
## OTHER SERVICES / INFRASTRUCTURE

1. **Services:** STP & OWC as per Requirements
2. **Intercom point :** Living /Dining of each apartment to Security
3. **CCTV:** At designated locations – as per design
4. **VDP:** At designated locations – as per design
5. **Inverter Provision only:** Provision for inverter (wiring only, Inverter in customer s scope)
6. **Provision for Wi-Fi:** Provision for a point – for connecting to Wi-Fi at living/Dining (modem/device not included)

# LIFE OVERLOOKING THE RIVERFRONT

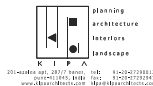


MASTER PLAN - PHASE 1 - B6, B7 AND B8

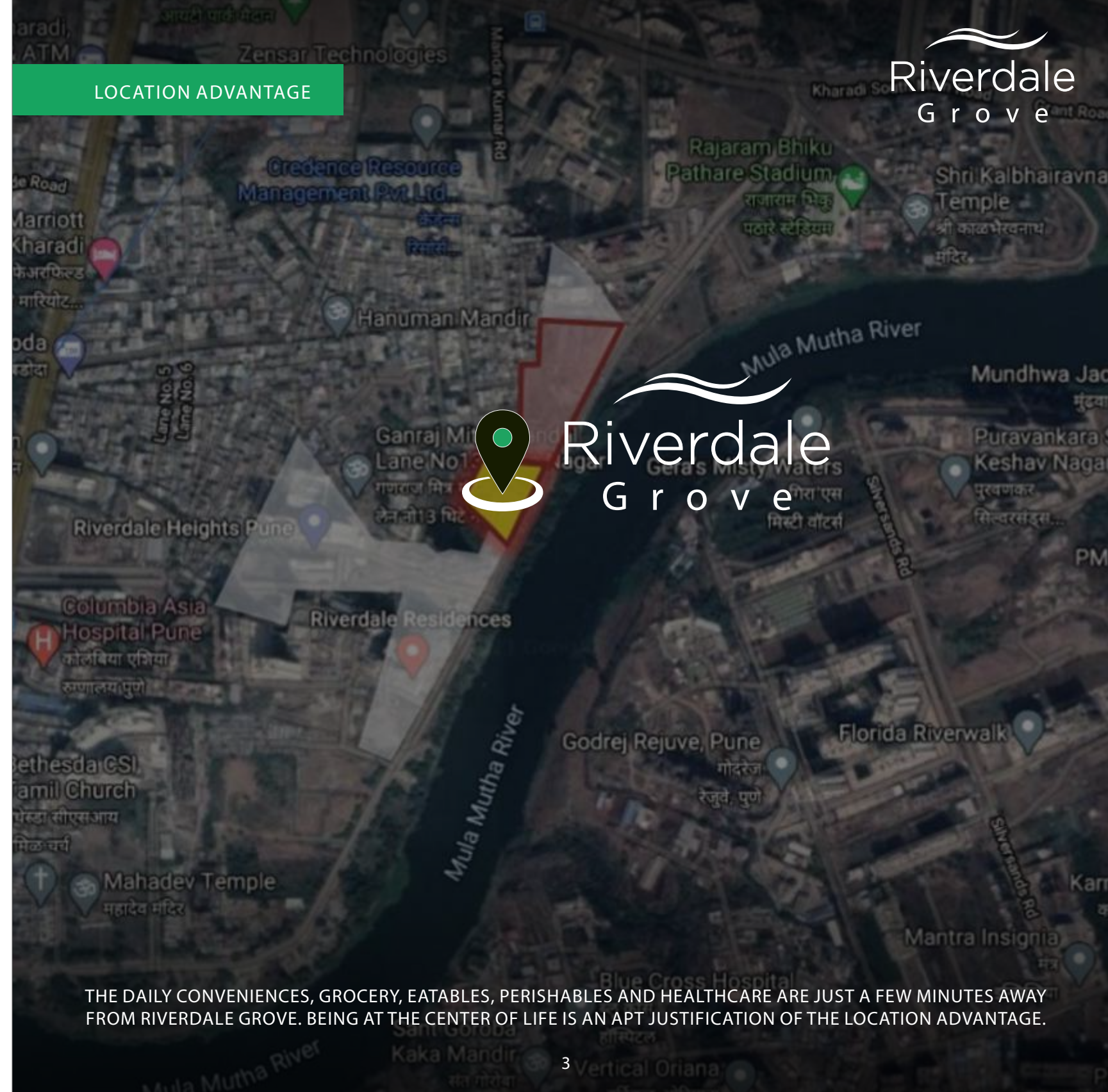


- ❖ 3 High Rise Towers
- ❖ Basement + 4 Parking + 26 Floors
- ❖ 6 Flats Per Floor
- ❖ 156 Units Per Tower
- ❖ 2BHK 3 Variants With City View And River View (615 Sq.ft., 711 Sq.ft., 797 Sq.ft.)

SCALE: NTS  
DATE: 05-01-21



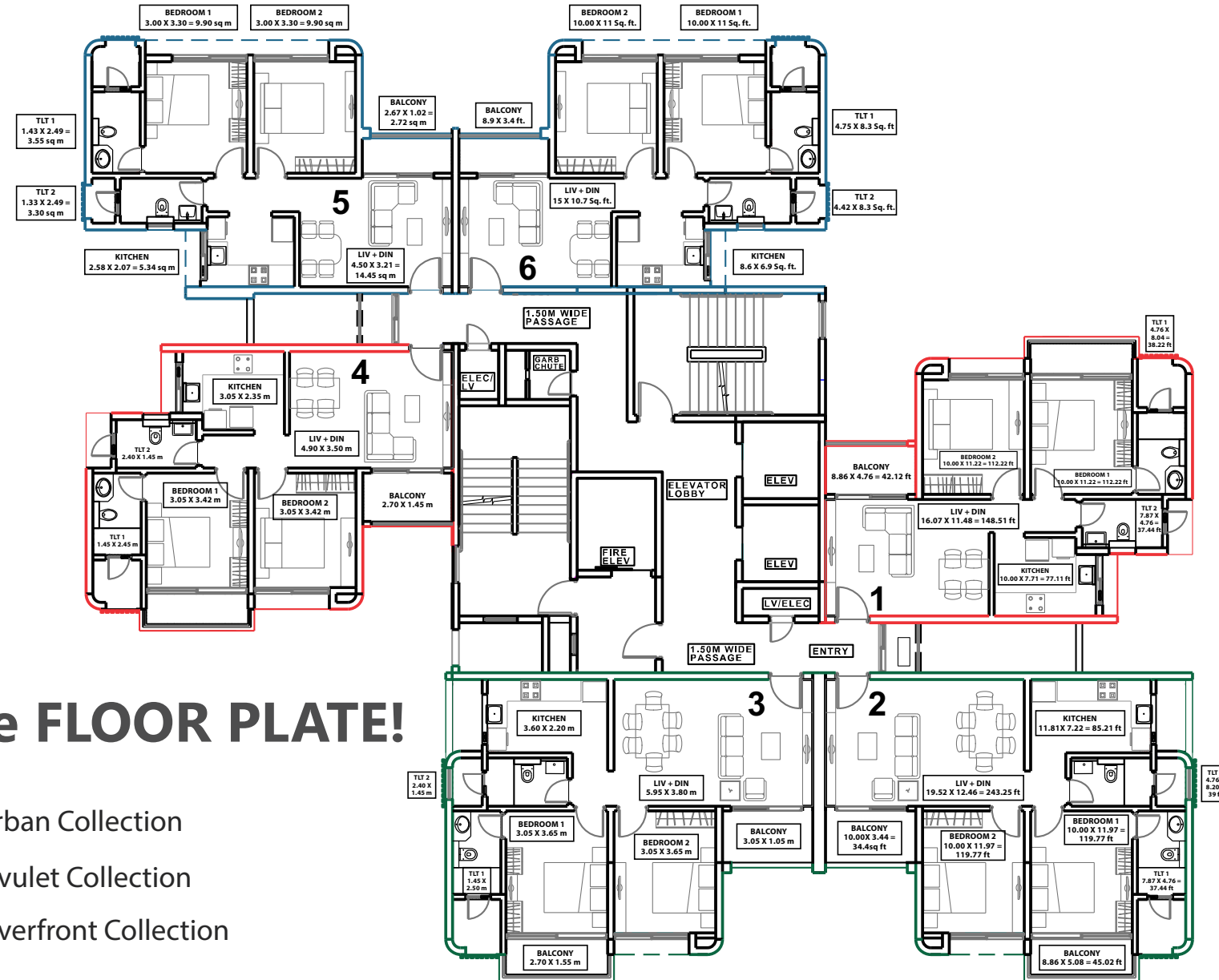
LOCATION ADVANTAGE



THE DAILY CONVENIENCES, GROCERY, EATABLES, PERISHABLES AND HEALTHCARE ARE JUST A FEW MINUTES AWAY FROM RIVERDALE GROVE. BEING AT THE CENTER OF LIFE IS AN APT JUSTIFICATION OF THE LOCATION ADVANTAGE.



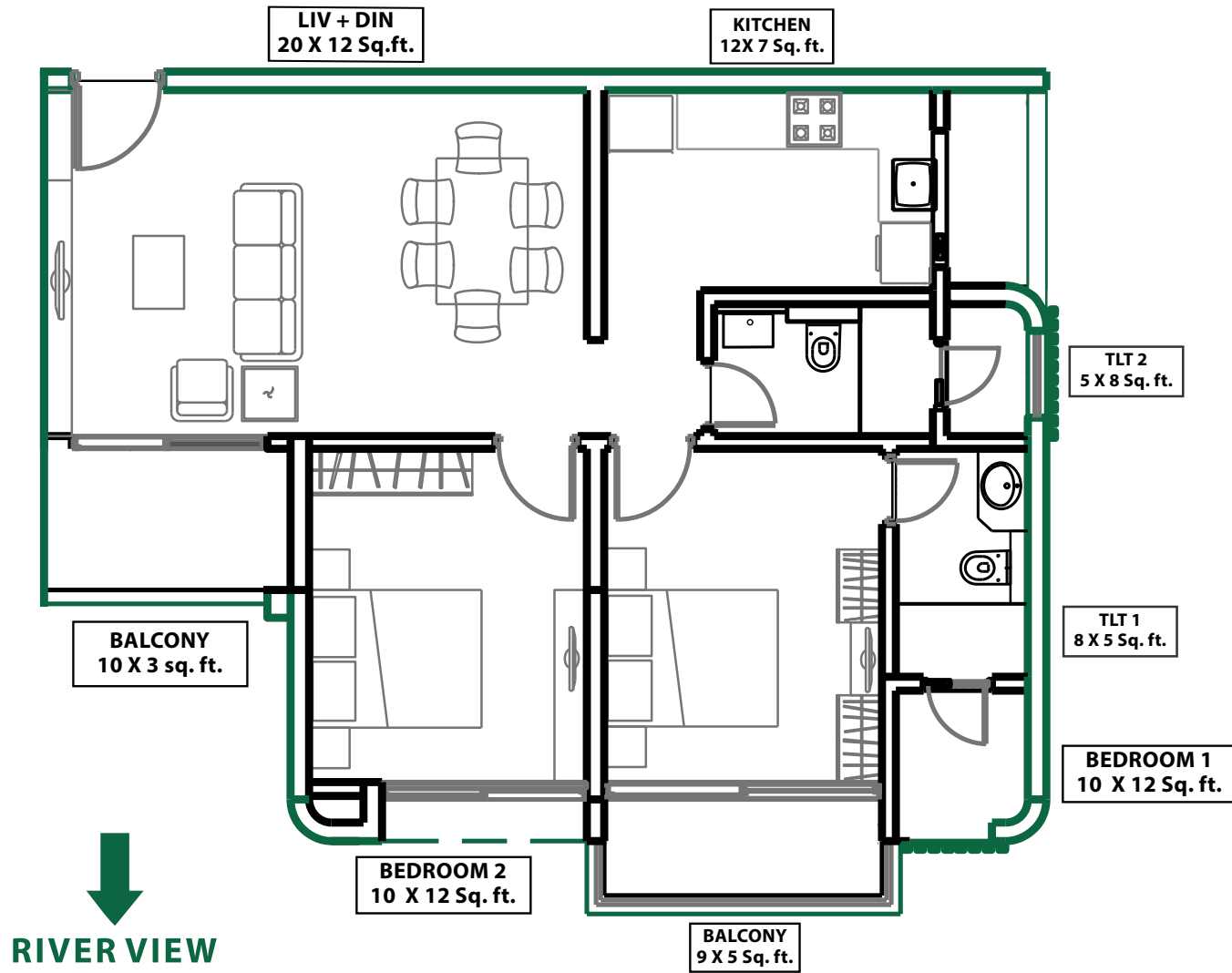
THE 24 MTR. ROAD (THE KHARADI-SHIVANE RIVERSIDE RD.) WILL TAKE YOU THROUGH TO KALYANI NAGAR IN UNDER 12 MINUTES. THE 30 MTR. ROAD WILL TAKE YOU TO KHARADI BYPASS IN A FRACTION OF THE EXISTING TIME



## The FLOOR PLATE!

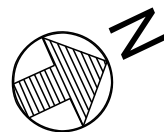
- Urban Collection
- Rivulet Collection
- Riverfront Collection

INDIVIDUAL UNIT PLAN FOR LARGE RIVERFRONT FACING 2 BHK

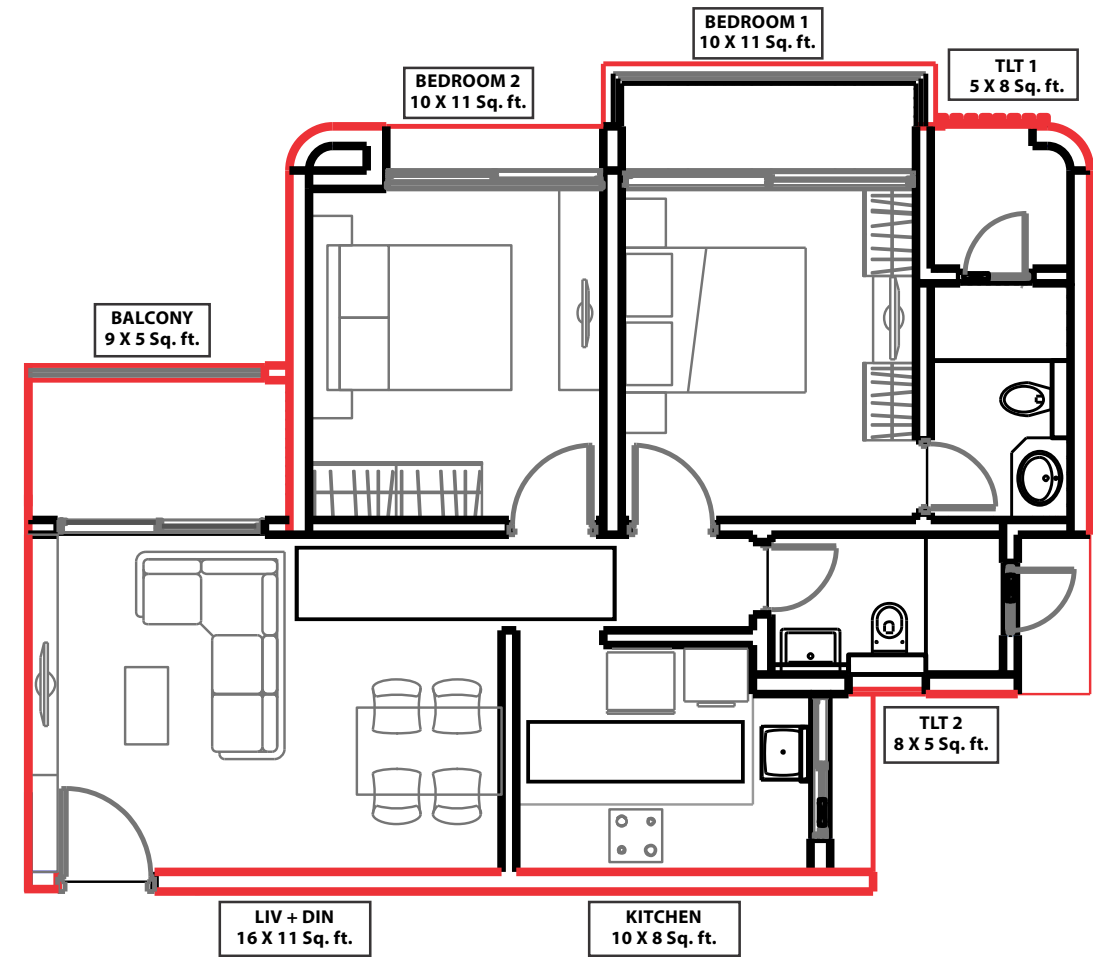


2 BHK LARGE - RIVERFRONT COLLECTION

TYPE	NAME	VIEW	CA (Sq.Mtr)	CA (Sq.Ft)
2BHK Large	Riverfront Collection	River View	74.03	797



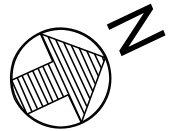
INDIVIDUAL UNIT PLAN FOR PARTIAL RIVER FACING 2 BHK



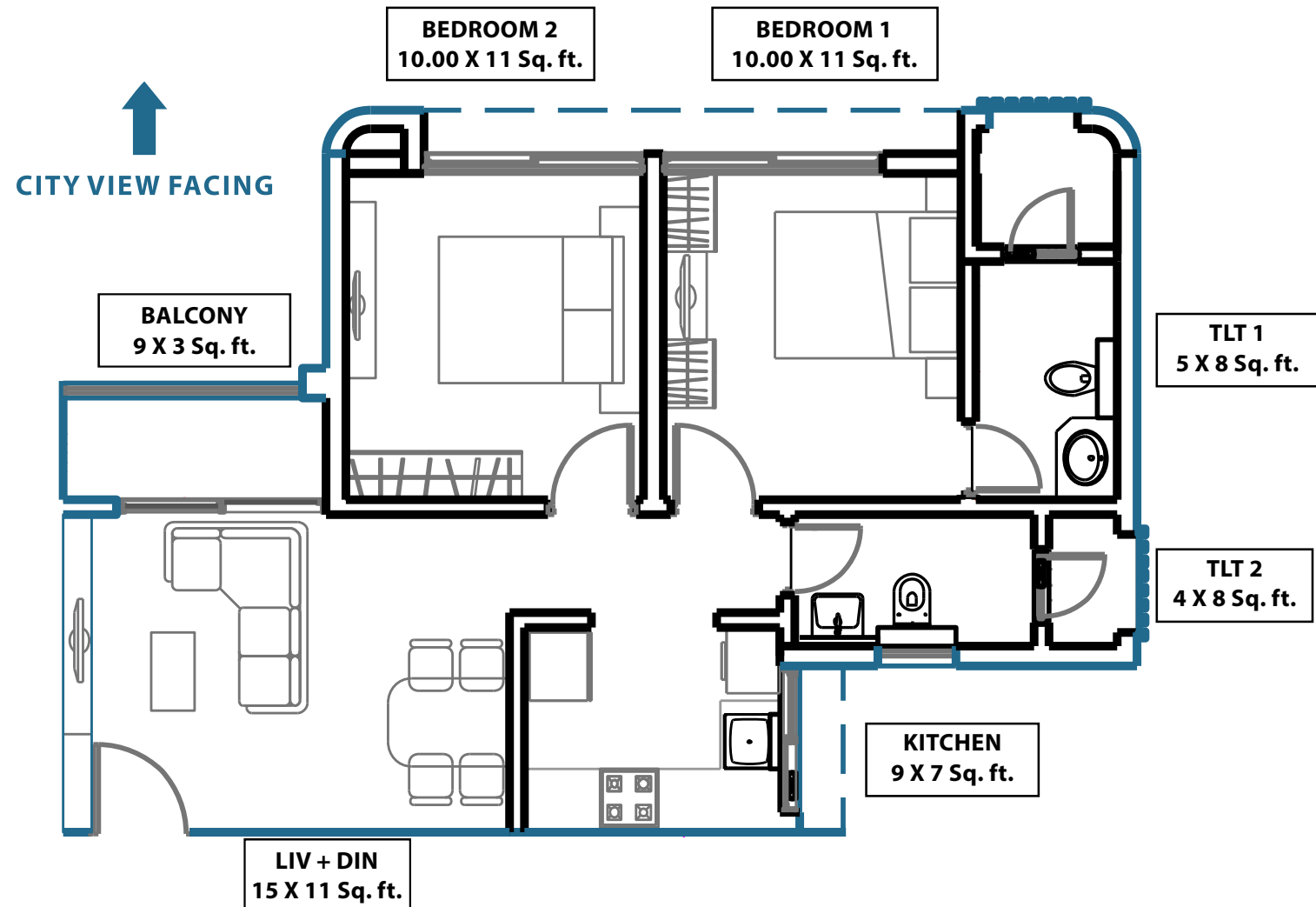
RIVER VIEW & CITY VIEW OPTIONS

2 BHK REGULAR - RIVULET COLLECTION

TYPE	NAME	VIEW	CA (Sq.Mtr)	CA (Sq.Ft)
2BHK Regular	Rivulet Collection	River / City View	66.05	711

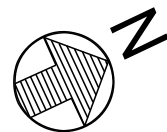


INDIVIDUAL UNIT PLAN FOR CITY FACING 2 BHK



2 BHK - URBAN COLLECTION

TYPE	NAME	VIEW	CA (Sq.Mtr)	CA (Sq.Ft)
2BHK	Urban Collection	City View	57.13	615



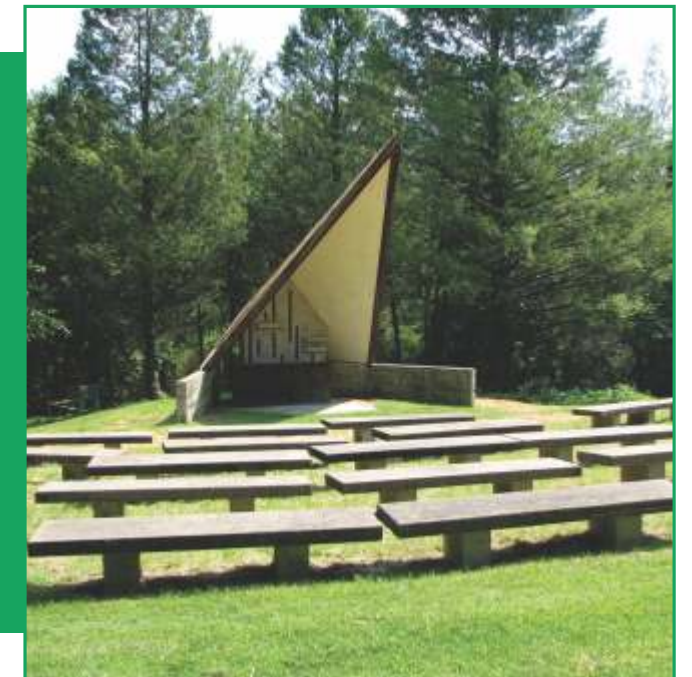
ETERNAL AMENITIES



SWIMMING POOL WITH CHILDREN'S POOL



GAZEBO & OPEN AMPHITHEATRE



Images are for representational purposes only

EXTERNAL AMENITIES



WALKING/JOGGING TRAIL / PART REFLEXOLOGY WALKWAY /  
KIDS PLAY AREA / OUTDOOR CHESS COURT / EDIBLE HERBS GARDEN

Images are for representational purposes only

CLUB HOUSE



RECEPTION / GYMNASIUM / YOGA & ZUMBA ROOM /  
CRECHE - DAY CARE / MULTI-PURPOSE GAMES ROOM

Images are for representational purposes only